



# INSTALLATION & OPERATION MANUAL

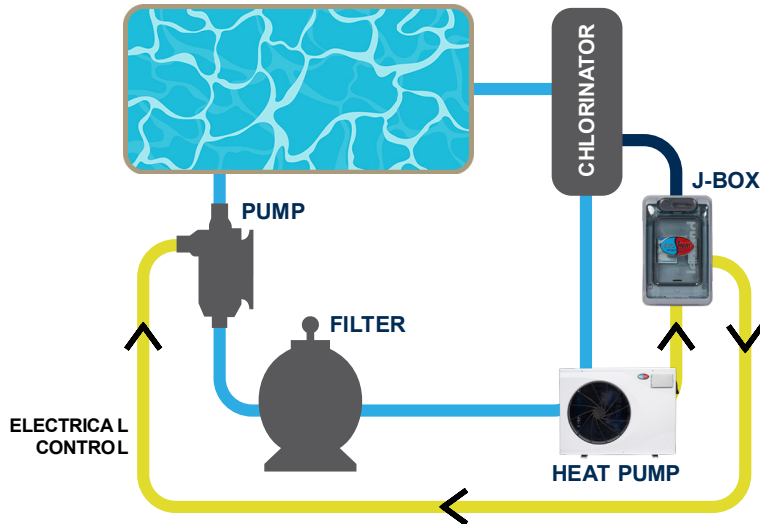


## EVO J-BOX

SAVE TIME, ENERGY & MONEY



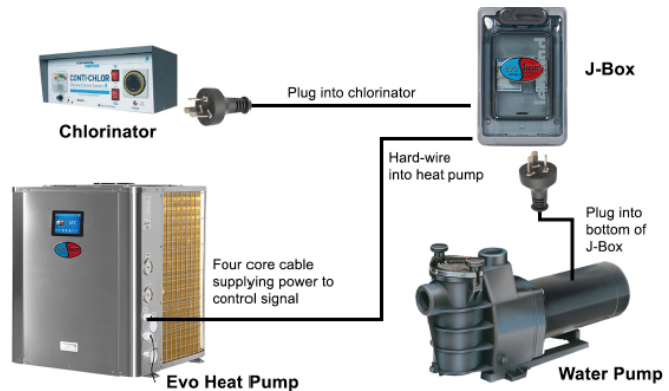
The Evo J-Box allows your heat pump to turn the main water pump on outside of your filtration times, saving you time, energy & money!



- Simple to install
- Easy to use
- Save on running costs
- Set and forget
- No water balance issues
- Only require one water pump

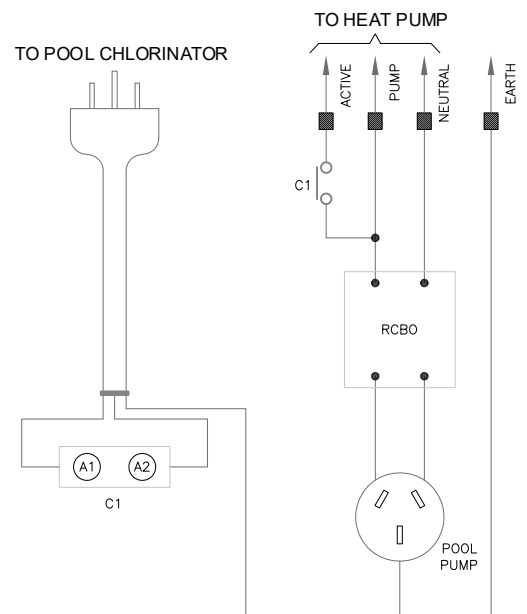
## EASY INSTALLATION – ELECTRICAL CONNECTION

- The heat pump, J-Box, and water pump are all on the same circuit, but the J-Box receives power from the heat pump.
- The electrical connection of the J-Box is separate to the electric connection of the heat pump
- The J-Box is supplied power by the heat pump, not the chlorinator.
- Refer to the heat pump owner's manual for power supply requirements and details on electrical connection.



## CONNECTING TO THE HEAT PUMP TERMINAL BLOCK

- Connect J-Box Active to Heat Pump Active (Brown Cable)
- Connect J-Box Neutral to Heat Pump Neutral (Blue Cable)
- Connect J-Box Earth to Heat Pump Earth (Green/Yellow Cable)
- Connect J-Box Active to Heat Pump Terminal 1 or Water Pump L – depending on model (White Cable)





**WIRING EXAMPLES**

